

LPDA

80/1000 MHz

LPDA Antenna

Antenna & Microwave Research Laboratory
Shahrood University of Technology



ELECTRICAL DATA

Model	LPDA 80/1000 MHz
Frequency Range	80 – 1000 MHz
Radiation Pattern	Directional
Polarization	Linear (Vertical or Horizontal)
Typical Gain	≥ 5 dBi @ Low Frequency
	≥ 8 dBi @ Mid Frequency
	≥ 7.5 dBi @ High Frequency
Half Power Beamwidth (Horizontal)	50 deg. @ Mid Frequency
Half Power Beamwidth (Vertical)	87 deg. @ Mid Frequency
Front to Back Ratio	≥ 9 dB
Input Impedance	50 Ω
Typical VSWR	≤ 2
Power Handling Capacity	150 Watts
Input Connector	N - Male
Cable Type	RG-142

MECHANICAL DATA

Body Material and Plating	Aluminum, Paint (Dark Gray)
Connector Material	Stainless Steel
Total Antenna Size (L×H×w)	175×200×20 (Cm)
Weight	7.5 Kg
Mounting Clamp Position	At the First Plate (Vertical or Horizontal)

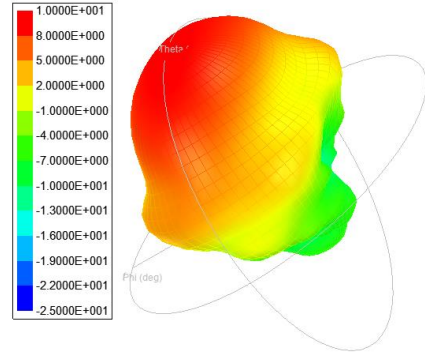
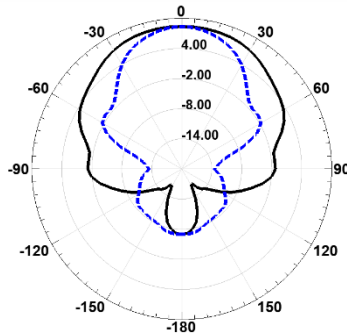
LPDA

80/1000 MHz

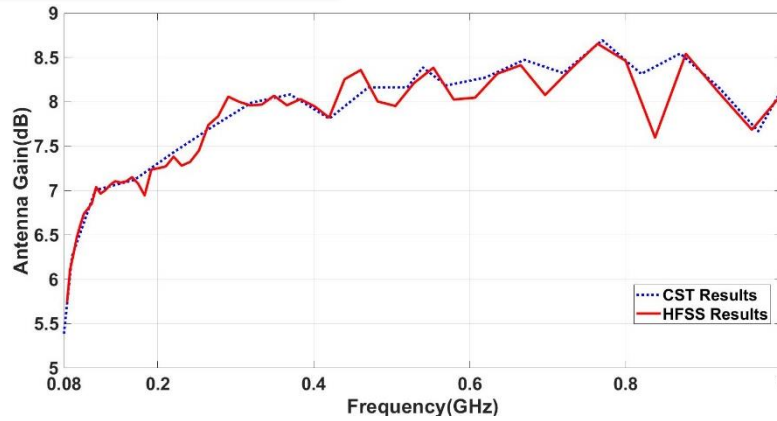
LPDA Antenna

Antenna & Microwave Research Laboratory
Shahrood University of Technology

RADIATION PATTERN @ 550 MHz



ANTENNA GAIN VS FREQUENCY



MEASURED VSWR

